



**STRONG PARTNERS.
TOUGH TRUCKS.™**

FORTENS™



DIESEL AND LPG FORKLIFT TRUCKS

H1.6-2.0FTS FORTENS / FORTENS ADVANCE

1 600 - 2 000 KG



FORTENS H1.6FT, H1.8FT, H2.0FTS

1.1	Manufacturer (abbreviation)	
1.2	Manufacturer's type designation	
	Model	
	Engine / transmission	
	Brake Type	
1.3	Drive: electric (battery or mains), diesel, petrol, LPG	
1.4	Operator type: hand, pedestrian, standing, seated, order-picker	
1.5	Rated capacity/rated load	Q (t)
1.6	Load centre distance	c (mm)
1.8	Load distance, centre of drive axle to fork	x (mm)
1.9	Wheelbase	y (mm)

2.1	Service weight	kg
2.2	Axle loading laden, front/rear	kg
2.3	Axle loading unladen, front/rear	kg

3.1	Tyres: L = pneumatic, V = solid, SE = Pneumatic Shape Solid	
3.2	Tyre size, front	
3.3	Tyre size, rear	
3.5	Number of wheels, front/rear (X = driven)	
3.6	Tread, front	b ₁₀ (mm)
3.7	Tread, rear	b ₁₁ (mm)

4.1	Tilt of mast / fork carriage forward / backward	α / β (°)
4.2	Height, mast lowered	h ₁ (mm)
4.3	Free lift, †	h ₂ (mm)
4.4	Lift †	h ₃ (mm)
4.5	Height, mast extended †	h ₄ (mm)
4.7	Height of overhead guard (cabin) ■	h ₅ (mm)
4.8	Seat height relating to SIP/stand height ○	h ₇ (mm)
4.12	Coupling height	h ₁₂ (mm)
4.19	Overall length	l ₁ (mm)
4.20	Length to face of forks	l ₂ (mm)
4.21	Overall width ◇	b ₁ (mm)
4.22	Fork dimensions DIN ISO 2331	s/e/l (mm)
4.23	Fork carriage ISO 2328, class/type A, B	
4.24	Fork carriage width ●	b ₂ (mm)
4.31	Ground clearance, laden, below mast	m ₁ (mm)
4.32	Ground clearance, centre of wheelbase	m ₂ (mm)
4.33	Load dimension b ₁₂ × l ₄ crossways	b ₁₂ × l ₄ (mm)
4.34	Aisle width predetermined load dimensions	A ₁₀ (mm)
4.34.1	Aisle width for pallets 1000 × 1200 crossways ◆	A ₁₀ (mm)
4.34.2	Aisle width for pallets 800 × 1200 lengthways ◆	A ₁₀ (mm)
4.35	Turning radius	W ₁ (mm)
4.36	Internal turning radius	b ₁₃ (mm)
4.41	90° intersecting aisle (with pallet W = 1200mm, L = 1000mm)	(mm)
4.42	Step height (from ground to running board)	(mm)
4.43	Step height (between intermediate steps between running board and floor)	(mm)

5.1	Travel speed, laden/unladen	km/h
5.2	Lift speed, laden/unladen	m/s
5.3	Lowering speed, laden/unladen	m/s
5.5	Drawbar pull, laden/unladen *	N
5.7	Gradeability, laden/unladen †	%
5.9	Acceleration time, laden/unladen	s
5.10	Service brake	

7.1	Engine manufacturer / type	
7.2	Engine power according to ISO 1585	kW
7.3	Rated speed	min ⁻¹
7.4	Number of cylinders/displacement	(-)/cm ³
7.5	Fuel consumption according to VDI cycle	l/h or kg/h

8.1	Type of drive unit	
10.1	Operating pressure for attachments	bar
10.2	Oil volume for attachments ■	l/min
10.3	Hydraulic oil tank, capacity	litres
10.4	Fuel tank, capacity	litres
10.7	Sound pressure level at the driver's seat ◇	dB(A)
10.7.1	Sound power level during the workcycle *	dB(A)
10.7.2	Guaranteed sound power 2000/14/EC	dB(A)
10.8	Towing coupling type	

HYSTER		HYSTER		HYSTER	
H1.6FT		H1.6FT		H1.8FT	
Fortens		Fortens		Fortens	
Yanmar 2.6L		PSI 2.0L		Yanmar 2.6L	
Electronic Powershift		Electronic Powershift		Electronic Powershift	
1-speed		1-speed		1-speed	
Drum Brakes		Drum Brakes		Drum Brakes	
Diesel		LPG		Diesel	
Seated		Seated		Seated	
1.6		1.6		1.8	
500		500		500	
384		384		384	
1385		1385		1385	

3059		3059		3134	
3856	565	3856	565	4190	509
1521	1538	1521	1538	1506	1628

SE		SE		SE	
6.50 x 10-10		6.50 x 10-10		6.50 x 10-10	
5.00 x 8		5.00 x 8		5.00 x 8	
2x	2	2x	2	2x	2
890		890		890	
895		895		895	

6	5	6	5	6	5
2175		2175		2175	
100		100		100	
3290		3290		3290	
3905		3905		3905	
2149		2149		2149	
1043		1043		1044	
321		321		321	
3236		3236		3236	
2236		2236		2236	
1068	1108	1238	1068	1108	1238
40 x 80 x 1000		40 x 80 x 1000		40 x 80 x 1000	
IIA		IIA		IIA	
977		977		977	
110		110		110	
146		146		146	
1000 x 1200		1000 x 1200		1000 x 1200	
3539		3539		3539	
3539		3539		3539	
3739		3739		3739	
1955		1955		1955	
584		584		584	
1830		1830		1830	
691		691		691	
371		371		371	

20.5	20.9	21.1	21.5	20.5	20.9
0.64	0.72	0.58	0.60	0.63	0.72
0.51	0.47	0.51	0.47	0.51	0.47
12390	7470	11393	7470	12260	7200
21.6	29.0	19.2	29.0	20.0	26.3
TBD		4.6	3.9	TBD	
Hydraulic		Hydraulic		Hydraulic	

Yanmar 4 TNE92		PSI 2.0L		Yanmar 4TNE92	
29.1		33.0		29.1	
2400		2400		2400	
4	2659	4	1997	4	2659
2.86		2.35		2.96	

Automatic		Automatic		Automatic	
0 - 155		0 - 155		0 - 155	
69		58		69	
31.7		31.7		31.7	
38.4		38.4		38.4	
79		77		79	
99		96		99	
102		101		102	
Pin		Pin		Pin	

HYSTER		HYSTER		HYSTER	
H1.8FT		H2.0FTS		H2.0FTS	
Fortens		Fortens		Fortens	
PSI 2.0L		Yanmar 2.6L		PSI 2.0L	
Electronic Powershift		Electronic Powershift		Electronic Powershift	
1-speed		1-speed		1-speed	
Drum Brakes		Drum Brakes		Drum Brakes	
LPG		Diesel		LPG	
Seated		Seated		Seated	
1.8		2.0		2.0	
500		500		500	
384		384		384	
1385		1385		1385	

3134		3294		3294		2.1
4190	509	4460	580	4460	580	2.2
1506	1628	1465	1829	1465	1829	2.3

SE		SE		SE		3.1
6.50 x 10-10		6.50 x 10-10		6.50 x 10-10		3.2
5.00 x 8		18 x 7-8		18 x 7-8		3.3
2x	2	2x	2	2x	2	3.5
890		890		890		3.6
895		895		895		3.7

6	5	6	5	6	5	4.1
2175		2175		2175		4.2
100		100		100		4.3
3290		3290		3290		4.4
3905		3905		3905		4.5
2149		2149		2149		4.7
1044		1044		1044		4.8
321		321		321		4.12
3236		3236		3268		4.19
2236		2268		2268		4.20
1068	1108	1238	1068	1108	1238	4.21
40 x 80 x 1000		40 x 100 x 1000		40 x 100 x 1000		4.22
IIA		IIA		IIA		4.23
977		977		977		4.24
110		110		110		4.31
146		146		146		4.32
1000 x 1200		1000 x 1200		1000 x 1200		4.33
3539		3569		3569		4.34
3539		3569		3569		4.34.1
3739		3769		3769		4.34.2
1955		1985		1985		4.35
584		584		584		4.36
1830		1855		1855		4.41
691		691		691		4.42
371		371		371		4.43

21.1	21.5	20.5	20.9	21.1	21.5	5.1
0.58	0.60	0.62	0.72	0.58	0.60	5.2
0.51	0.47	0.51	0.47	0.51	0.47	5.3
11353	7200	12140	6930	11297	6930	5.5
18.0	26.3	17.9	23.6	16.6	23.6	5.7
4.7	4.0	TBD		4.8	4.1	5.9
Hydraulic		Hydraulic		Hydraulic		5.10

PSI 2.0L		Yanmar 4TNE92		PSI 2.0L		7.1
33.0		29.1		33.0		7.2
2400		2400		2400		7.3
4	1997	4	2659	4	1997	7.4
2.42		3.11		2.52		7.5

Automatic		Automatic		Automatic		8.1
0 - 155		0 - 155		0 - 155		10.1
58		69		58		10.2
31.7		31.7		31.7		10.3
38.4		38.4		38.4		10.4
77		80		77		10.7
96		99		96		10.7.1
101		102		101		10.7.2
Pin		Pin		Pin		10.8

NOTE:

Specifications are affected by the condition of the vehicle and how it is equipped, as well as the nature and condition of the operating area. If these specifications are critical, the proposed application should be discussed with your dealer.

- † Bottom of forks
 - Without load backrest
- h₅ subject to +/- 5 mm tolerance
- Full-suspension seat in depressed position
- ◇ Standard/Intermediate/Wide.
- Wide tread not available on H2.0FTS.
- Add 32mm with load backrest
- ◆ Stacking aisle width (lines 4.34.1 & 4.34.2) are based on the VDI standard calculation as shown on illustration. The British Industrial Truck Association recommends the addition of 100 mm to the total clearance (dimension a) for extra operating margin at the rear of the truck.
- * @ 1.6km/h. Drawbar pull performance figure (line 5.4) is only indicative for comparison purpose. These performances are only possible for a short period of time.
- † @ 4.8km/h. Gradeability figures are provided for comparison of tractive performance, but are not intended to endorse the operation of the vehicle on the stated inclines. Follow instructions in the operating manual regarding operation on inclines.

Variable

◇ L_{PAZ}, Measured according to the test cycles and based on the weighting values contained in EN12053

L_{WAZ}, measured according to the test cycles and based on the weighting values contained in EN12053

MAST TABLES:

- ◇ With load backrest
 - Without load backrest
- ◆ Wide Tread Width Drive Tyres must be specified
- * Intermediate Tread Width Drive Tyres must be specified

NOTICE:

Care must be exercised when handling elevated loads. When the carriage and/or load is elevated, truck stability is reduced. It is important that mast tilt in either direction be kept to a minimum when loads are elevated. Operators must be trained and adhere to the instructions contained in the Operating Manual.

Hyster products are subject without notice. Lift trucks illustrated may feature optional equipment.

CE Safety:
This truck conforms to the current EU requirements.

Specification data is based on VDI 2198

EQUIPMENT AND WEIGHT:

Weights (line 2.1) are based on the following specifications:

Complete truck with 3 330 mm 2-stage limited free lift mast, standard carriage and 1 000 mm forks with e-hydraulics, overhead guard and standard pneumatic shaped solid drive and steer tyres.

FORTENS ADVANCE H1.6FT, H1.8FT, H2.0FTS

1.1	Manufacturer (abbreviation)	
1.2	Manufacturer's type designation	
	Model	
	Engine / transmission	
	Brake Type	
1.3	Drive: electric (battery or mains), diesel, petrol, LPG	
1.4	Operator type: hand, pedestrian, standing, seated, order-picker	
1.5	Rated capacity/rated load	Q (t)
1.6	Load centre distance	c (mm)
1.8	Load distance, centre of drive axle to fork	x (mm)
1.9	Wheelbase	y (mm)

2.1	Service weight	kg
2.2	Axle loading laden, front/rear	kg
2.3	Axle loading unladen, front/rear	kg

3.1	Tyres: L = pneumatic, V = solid, SE = Pneumatic Shape Solid	
3.2	Tyre size, front	
3.3	Tyre size, rear	
3.5	Number of wheels, front/rear (X = driven)	
3.6	Tread, front	b ₁₀ (mm)
3.7	Tread, rear	b ₁₁ (mm)

4.1	Tilt of mast / fork carriage forward / backward	α / β (°)
4.2	Height, mast lowered	h ₁ (mm)
4.3	Free lift, †	h ₂ (mm)
4.4	Lift †	h ₃ (mm)
4.5	Height, mast extended †	h ₄ (mm)
4.7	Height of overhead guard (cabin) ■	h ₅ (mm)
4.8	Seat height relating to SIP/stand height ○	h ₇ (mm)
4.12	Coupling height	h ₁₂ (mm)
4.19	Overall length	l ₁ (mm)
4.20	Length to face of forks	l ₂ (mm)
4.21	Overall width ◇	b ₁ (mm)
4.22	Fork dimensions DIN ISO 2331	s/e/l (mm)
4.23	Fork carriage ISO 2328, class/type A, B	
4.24	Fork carriage width ●	b ₂ (mm)
4.31	Ground clearance, laden, below mast	m ₁ (mm)
4.32	Ground clearance, centre of wheelbase	m ₂ (mm)
4.33	Load dimension b ₁₂ × l ₄ crossways	b ₁₂ × l ₄ (mm)
4.34	Aisle width predetermined load dimensions	A ₁₀ (mm)
4.34.1	Aisle width for pallets 1000 × 1200 crossways ◆	A ₁₀ (mm)
4.34.2	Aisle width for pallets 800 × 1200 lengthways ◆	A ₁₀ (mm)
4.35	Turning radius	W ₁ (mm)
4.36	Internal turning radius	b ₁₃ (mm)
4.41	90° intersecting aisle (with pallet W = 1200mm, L = 1000mm)	(mm)
4.42	Step height (from ground to running board)	(mm)
4.43	Step height (between intermediate steps between running board and floor)	(mm)

5.1	Travel speed, laden/unladen	km/h
5.2	Lift speed, laden/unladen	m/s
5.3	Lowering speed, laden/unladen	m/s
5.5	Drawbar pull, laden/unladen *	N
5.7	Gradeability, laden/unladen †	%
5.9	Acceleration time, laden/unladen	s
5.10	Service brake	

7.1	Engine manufacturer / type	
7.2	Engine power according to ISO 1585	kW
7.3	Rated speed	min ⁻¹
7.4	Number of cylinders/displacement	(-)/cm ³
7.5	Fuel consumption according to VDI cycle	l/h or kg/h

8.1	Type of drive unit	
10.1	Operating pressure for attachments	bar
10.2	Oil volume for attachments ■	l/min
10.3	Hydraulic oil tank, capacity	litres
10.4	Fuel tank, capacity	litres
10.7	Sound pressure level at the driver's seat ◇	dB(A)
10.7.1	Sound power level during the workcycle *	dB(A)
10.7.2	Guaranteed sound power 2000/14/EC	dB(A)
10.8	Towing coupling type	

HYSTER		HYSTER		HYSTER	
H1.6FT		H1.6FT		H1.8FT	
Fortens Advance		Fortens Advance		Fortens Advance	
Yanmar 2.6L		PSI 2.0L		Yanmar 2.6L	
DuraMatch™		DuraMatch™		DuraMatch™	
1-speed		1-speed		1-speed	
ADS Drum Brakes		ADS Drum Brakes		ADS Drum Brakes	
Diesel		LPG		Diesel	
Seated		Seated		Seated	
1.6		1.6		1.8	
500		500		500	
384		384		384	
1385		1385		1385	

3059		3059		3134	
3856	565	3856	565	4190	509
1521	1538	1521	1538	1506	1628

SE		SE		SE	
6.50 X 10 -10		6.50 X 10 -10		6.50 X 10 -10	
5.00 x 8		5.00 x 8		5.00 x 8	
2x	2	2x	2	2x	2
890		890		890	
895		895		895	

6	5	6	5	6	5
2175		2175		2175	
100		100		100	
3290		3290		3290	
3905		3905		3905	
2149		2149		2149	
1044		1044		1044	
321		321		321	
3236		3236		3236	
2236		2236		2236	
1068	1108	1238	1068	1108	1238
40 x 80 x 1000		40 x 80 x 1000		40 x 80 x 1000	
IIA		IIA		IIA	
977		977		977	
110		110		110	
146		146		146	
1000 x 1200		1000 x 1200		1000 x 1200	
3539		3539		3539	
3539		3539		3539	
3739		3739		3739	
1955		1955		1955	
584		584		584	
1830		1830		1830	
691		691		691	
371		371		371	

20.5	20.9	21.1	21.5	20.5	20.9
0.64	0.72	0.58	0.60	0.63	0.72
0.51	0.47	0.51	0.47	0.51	0.47
12390	7470	11393	7470	12260	7200
21.6	29.0	19.2	29.0	20.0	26.3
TBD		4.6	3.9	TBD	
Hydraulic		Hydraulic		Hydraulic	

Yanmar 4 TNE92		PSI 2.0L		Yanmar 4TNE92	
29.1		33.0		29.1	
2400		2400		2400	
4	2659	4	1997	4	2659
2.86		2.35		2.96	

Automatic		Automatic		Automatic	
0 - 155		0 - 155		0 - 155	
69		58		69	
31.7		31.7		31.7	
38.4		38.4		38.4	
79		77		79	
99		96		99	
102		101		102	
Pin		Pin		Pin	

HYSTER		HYSTER		HYSTER	
H1.8FT		H2.0FTS		H2.0FTS	
Fortens Advance		Fortens Advance		Fortens Advance	
PSI 2.0L		Yanmar 2.6L		PSI 2.0L	
DuraMatch™		DuraMatch™		DuraMatch™	
1-speed		1-speed		1-speed	
ADS Drum Brakes		ADS Drum Brakes		ADS Drum Brakes	
LPG		Diesel		LPG	
Seated		Seated		Seated	
1.8		2.0		2.0	
500		500		500	
384		384		384	
1385		1385		1385	

3134		3294		3294	
4190	509	4460	580	4460	580
1506	1628	1521	1829	1465	1829

SE		SE		SE	
6.50 X 10 -10		6.50 X 10 -10		6.50 X 10 -10	
5.00 x 8		18 x 7-8		18 x 7-8	
2x	2	2x	2	2x	2
890		890		890	
895		895		895	

6	5	6	5	6	5	4.1
2175		2175		2175		4.2
100		100		100		4.3
3290		3290		3290		4.4
3905		3905		3905		4.5
2149		2149		2149		4.7
1044		1044		1044		4.8
321		321		321		4.12
3236		3236		3268		4.19
2236		2268		2268		4.20
1072	1112	1242	1068	1108	1242	4.21
40 x 80 x 1000		40 x 100 x 1000		40 x 100 x 1000		4.22
IIA		IIA		IIA		4.23
977		977		977		4.24
110		110		110		4.31
146		146		146		4.32
1000 x 1200		1000 x 1200		1000 x 1200		4.33
3539		3569		3569		4.34
3539		3569		3569		4.34.1
3739		3769		3769		4.34.2
1955		1985		1985		4.35
584		584		584		4.36
1830		1855		1855		4.41
691		691		691		4.42
371		371		371		4.43

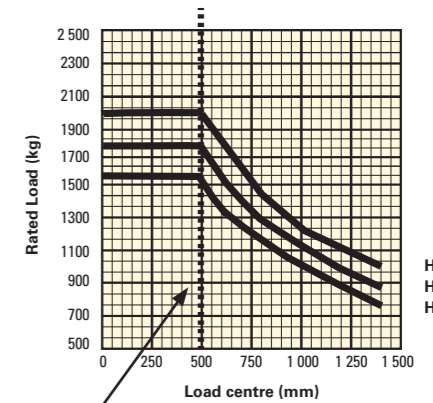
21.1	21.5	20.5	20.9	21.1	21.5	5.1
0.58	0.60	0.62	0.72	0.58	0.60	5.2
0.51	0.47	0.51	0.47	0.51	0.47	5.3
11353	7200	12140	6930	11297	6930	5.5
18.0	26.3	17.9	23.6	16.6	23.6	5.7
4.7	4.0	TBD		4.8	4.1	5.9
Hydraulic		Hydraulic		Hydraulic		5.10

PSI 2.0L		Yanmar 4TNE92		PSI 2.0L	
33.0		29.1		33.0	
2400		2400		2400	
4	1997	4	2659	4	1997
2.42		3.11		2.52	

Automatic		Automatic		Automatic	
0 - 155		0 - 155		0 - 155	
58		69		58	
31.7		31.7		31.7	
38.4		38.4		38.4	
77		80		77	
96		99		96	
101		102		101	
Pin		Pin		Pin	

RATED CAPACITIES

Standard carriage

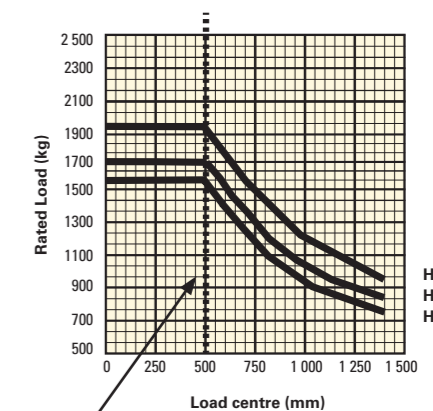


Standard 500mm load centre

Load centre
Distance from front of forks to centre of gravity of load.

Rated load
Based on vertical masts up to 4 300 mm.

Integral side shift carriage



Standard 500mm load centre

Load centre
Distance from front of forks to centre of gravity of load.

Rated load
Based on vertical masts up to 4 300 mm.

Specification data is based on VDI 2198

EQUIPMENT AND WEIGHT:

Weights (line 2.1) are based on the following specifications:

Complete truck with 3 330 mm 2-stage limited free lift mast, standard carriage and 1 000 mm forks with e-hydraulics, overhead guard and standard pneumatic shaped solid drive and steer tyres.

MAST AND CAPACITY INFORMATION

Values shown are for standard equipment. When using non-standard equipment, these values may change. Please contact your Hyster dealer for information.

MASTS H1.6-2.0FT

	Maximum Fork Height (mm) ❖	Back Tilt	Overall Lowered Height (mm)	Overall Extended Height (mm)	Free lift (top of forks) (mm) □
2-stage Limited Free Lift	3 330	5°	2 175	4 555 ❖	140
	3 830	5°	2 425	5 055 ❖	140
	4 330	5°	2 775	5 555 ❖	140
2-stage Full Free Lift	3 215	5°	2 125	4 440	1 550
3-stage Full Free Lift	4 450	3°	2 025	5 670	1 455 •
	4 900	3°	2 175	6 120	1 605 •
	5 500	3°	2 425	6 720	1 855 •

H1.6-2.0FT - Capacity chart in kg @ 500mm load centre

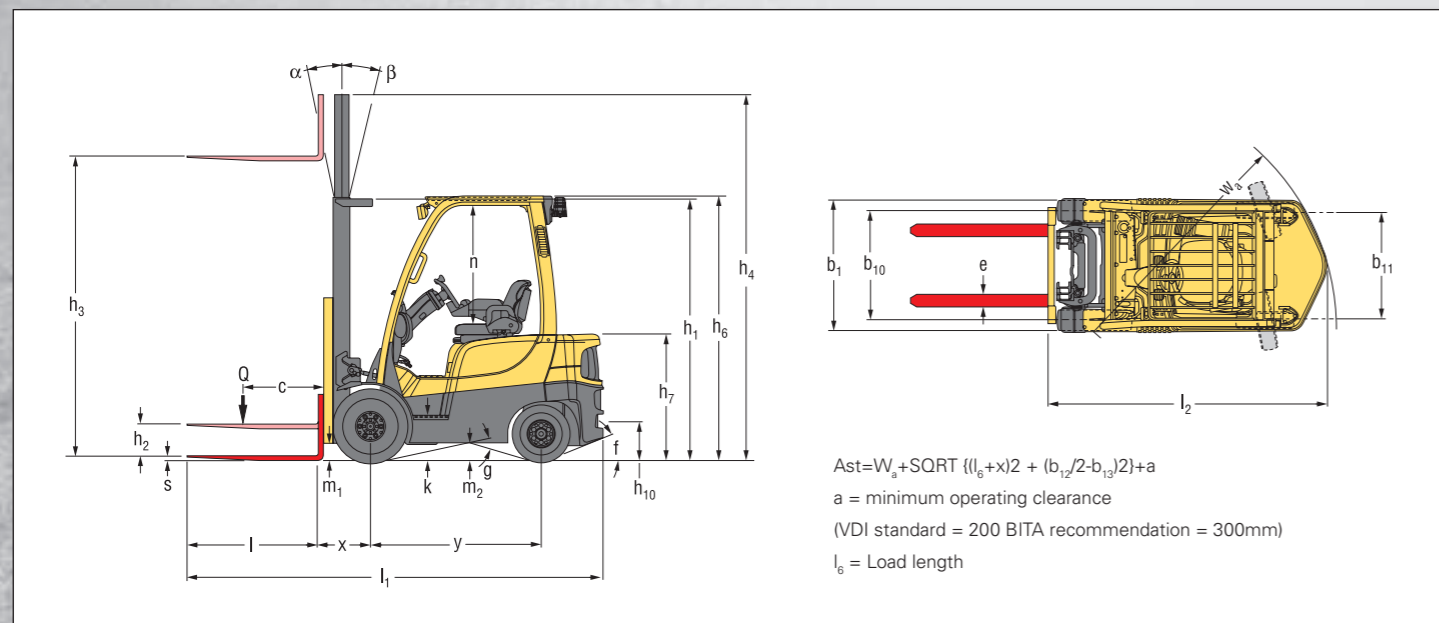
	Maximum fork height (mm)	Pneumatic Shaped Solid Tyres					
		Without sideshift			With intergral sideshift		
		H1.6FT	H1.8FT	H2.0FTS	H1.6	H1.8	H2.0FTS
2-stage Limited Free Lift	3 330	1 600	1 800	2 000	1 600	1 750	1 970
	3 830	1 600	1 800	2 000	1 600	1 740	1 960
	4 330	1 600	1 740	1 940	1 600	1 680	1 900
2-stage Full Free Lift	3 215	1 600	1 800	2 000	1 600	1 760	1 970
3-stage Full Free Lift	4 450	1 570	1 740	1 910	1 570	1 680	1 880
	4 900	1 490	1 650	1 790*	1 480	1 590	1 790
	5 500	1 330	1 500*	1 520*	1 320	1 450*	1 510*

H1.6-2.0FT - Capacity chart in kg @ 500mm load centre

	Maximum fork height (mm)	Pneumatic Radial Tyres					
		Without sideshift			With intergral sideshift		
		H1.6FT	H1.8FT	H2.0FTS	H1.6	H1.8	H2.0FTS
2-stage Limited Free Lift	3 330	1 600	1 800	2 000	1 600	1 750	1 970
	3 830	1 600	1 800	2 000	1 600	1 740	1 960
	4 330	1 600	1 740	1 940*	1 600	1 680	1 900*
2-stage Full Free Lift	3 215	1 600	1 800	2 000	1 600	1 760	1 970
3-stage Full Free Lift	4 450	1 570*	1 680*	1 690*	1 570*	1 670*	1 680*
	4 900	1 490	1 650	1 380*	1 480	1 580	1 360*
	5 500	1 330	1 320	1 040*	1 280	1 290	1 010*

NOTE: To calculate truck capacities with alternative truck specifications to the ones shown in the above tables, please use the Hy-Rater software

TRUCK DIMENSIONS



PRODUCT FEATURES

This series of trucks is available in two configurations

The Fortens™ truck offers first-rate performance for many applications, geared to minimise cost of acquisition without compromising performance.

The Fortens Advance truck provides excellent performance for applications, optimised for lowest hourly operating cost.

ENGINES & FUEL SYSTEM

Heavy Duty Diesel Engines from Yanmar have super quick glow plugs allowing the engine to start quickly and reliably under cold conditions, the cold start device delivering a cleaner exhaust by advancing the fuel injection timing based on water temperature. Emissions have been reduced by controlling fuel injection timing according to engine load.

For LPG trucks a 2.0L PSI engine is utilised with full throttle power of 33.0 kW at 2400 rpm, and maximum torque is 136 Nm at 2300 rpm. It has a robust design with a cast iron cylinder block and no plug wires, distributor caps or rotors.

TRANSMISSION

The Standard Fortens model features an Electronic Powershift Transmission. The Fortens Advance models are available with the electronically controlled DuraMatch™ transmission, providing:

- **Auto Deceleration System (ADS)** automatically slows the truck when the accelerator pedal is released, and finally brings the truck to a stop, which helps to significantly extend brake life. In addition, this feature assists the driver to accurately position the truck in front of a load. There are 10 ADS settings, programmable via the dash display by a service technician, which deliver different braking characteristics, from very gradual to aggressive, to suit the needs of the application.

- **Controlled Power Reversal;** the Pacesetter VSM™ controls the transmission to deliver smooth direction changes. The VSM reduces the throttle to slow the engine, initiates auto-deceleration to stop the truck, changes the transmission direction automatically and increases the throttle to accelerate the truck. The system virtually eliminates tyre spin and shock loads on the transmission and significantly

increases tyre life. As with ADS, the system is programmable via the dash display by a service technician, with settings from 1 to 10, to suit the needs of the application.

- **Controlled Roll-Back on Ramp;** the transmission controls the rate of decent of the truck on a ramp, when the brake and throttle pedal are released, to provide maximum control on a grade and increase operator productivity.

The transmissions are compatible with 2 available aluminium core radiators and a superior counterweight tunnel design coupled with a “pusher” type fan, to provide the industry’s best cooling.

All powertrains are controlled, protected and managed by **The Pacesetter VSM™** industrial onboard computer featuring a CANbus communications network. This system permits adjustment and optimisation of the truck’s performance, in addition to monitoring key functions. It enables quick, easy diagnostics, minimising repair downtime and unnecessary parts swapping. Hassle-Free Hydraulic systems, featuring Leak-free O-ring face seal fittings reduce leaks for enhanced reliability.

Non-mechanical, Hall-Effect sensors and switches have been fitted and are designed to outlast the life of the truck.

- **Autospeed Hydraulics** With optional Auto-speed Hydraulics the engine speed is automatically increased to provide full hydraulic power. The Pacesetter VSM maintains the current travel speed (or prevents travel) until the operator steps on the accelerator. No operator inching is required and productivity and efficiency is increased by simplifying operator actions.

The operator compartment features class-leading **Ergonomics** for maximum driver comfort and productivity.

- Operator space is optimised, thanks to the overhead guard design and significantly more floor space.
- The Easy-to-use 3-point entry design of the operator compartment has an open non-slip step with a height of just 37.1 cm.
- The isolated drivetrain minimises the effect of powertrain vibration.

- The adjustable armrest that accompanies the TouchPoint™ E-hydraulic configurations moves with the seat and telescopes forward.

- The Rear grab handle with horn button facilitates reverse driving.

- An infinitely adjustable steering column, 30cm diameter steering wheel with spinner knob and full-suspension seat enhance driver comfort.

The Hyster Fortens is the fastest and easiest lift truck to **Service**.

- Complete cowl-to-counterweight service access and simplified layout of wiring and hydraulics offers greater access to components, which in turn decreases service time for unscheduled repairs and regular maintenance.

- Fast, colour-coded daily checks and diagnostic systems can be managed via the dash display.

- An Engine coolant change and Hydraulic oil change interval of 4 000 hours also contributes to reduced downtime.

STRONG PARTNERS. TOUGH TRUCKS.™

FOR DEMANDING OPERATIONS, EVERYWHERE.

Hyster supplies a complete range of warehouse equipment, IC and electric counterbalanced trucks, container handlers and reach stackers. Hyster is committed to being much more than a lift truck supplier.

Our aim is to offer a complete partnership capable of responding to the full spectrum of material handling issues: Whether you need professional consultancy on your fleet management, fully qualified service support, or reliable parts supply, you can depend on Hyster.

Our network of highly trained dealers provides expert, responsive local support. They can offer cost-effective finance packages and introduce effectively managed maintenance programmes to ensure that you get the best possible value. Our business is dealing with your material handling needs so you can focus on the success of your business today and in the future.



HYSTER EUROPE

Centennial House, Frimley Business Park, Frimley, Surrey, GU16 7SG, England.

Tel: +44 (0) 1276 538500



www.hyster.eu



infoeurope@hyster.com



[/HysterEurope](https://www.facebook.com/HysterEurope)




[@HysterEurope](https://twitter.com/HysterEurope)




[/HysterEurope](https://www.youtube.com/HysterEurope)



HYSTER-YALE UK LIMITED trading as Hyster Europe. Registered Address: Centennial House, Building 4.5, Frimley Business Park, Frimley, Surrey, GU16 7SG, United Kingdom. Registered in England and Wales. Company Registration Number: 02636775.

HYSTER,  and FORTENS are registered trademarks in the European Union and certain other jurisdictions.

MONOTROL® is a registered trademark, and DURAMATCH and  are trademarks in the United States and in certain other jurisdictions.

Hyster products are subject to change without notice. Lift trucks illustrated may feature optional equipment.